

Here are just some examples of the Scanning and Data Capture services that GeODC have supplied to Local Government Clients:

Scanning



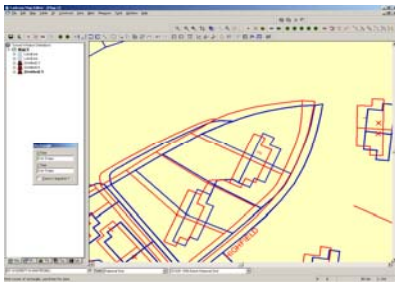
Cropping



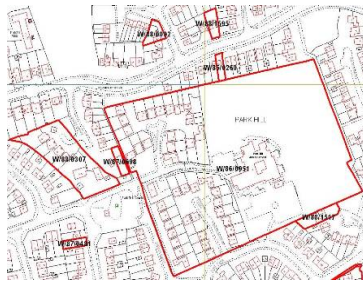
Georeferencing



We can improve your Positional Accuracy:



Capture Your Planning Application Boundaries:



Capture Basic Land and Property Units (BLPUs):



If it's on a map, GeODC can capture it!

Please visit www.geodc.co.uk/scanning services for a full case study of Thanet District Council's on-site scanning project

If you would like to learn more about how we can help you understand your business continuity requirements please call



on 01865 772893

Further data capture examples include:

- Adopted **H**ighways
- Conversion of **H**istoric **P**lanning **A**pplications
- Capture of **P**lanning **C**onstraints and **L**ocal **P**lans
- **L**and **C**harge **R**egisters
- Compilation of digital **L**and **T**erriers and digitising of **D**eed records
- **L**ocal **L**and and **P**roperty **G**azetteers (LLPG) cleaning
- Positioning services for addresses and capture of **B**LP**U** boundaries
- **P**ositional **A**ccuracy **I**mprovement (PAI)
- Linking of Spatial and Textual records
- **C**ontaminated **L**and
- **G**round **M**aintenance records
- Capture of street furniture, street lights, refuse collection services etc
- Raster Scanning of historical maps
- Capture of field boundaries
- Textual data capture
- Scanning and data capture from historical **M**icrofiche and **M**icrofilm

We're on the Web!
www.geodc.co.uk

GeODC Help Eastleigh Borough Council Improve Customer Service



Eastleigh Borough Council awarded the contract to data capture and conversion specialists GeODC to convert nearly half million paper records into digital files. Once completed the computerised planning records will allow Eastleigh to significantly cut the time taken to complete Local Land Charges Searches and improve the overall service provided by the Council. The contract was awarded to GeODC following a successful tender process that considered value for money, quality and previous experience.

Eastleigh Borough Council has a statutory responsibility to maintain the Local Land Charges Register. Combined with information from other Council departments, this register is used to complete Local Land Charge Searches on behalf of prospective homebuyers and other interested parties. GeODC will scan and capture text from an estimated 50,000 property cards that form the Land Charge Register, this information will then be linked to the Council's centralised address database (LLPG). GeODC will also convert nearly 500 papers maps, used to record the spatial boundaries of Land Charges, and other department specific data. Once geo-referenced the digital files will available for use in Eastleigh's GGP geographical information system (GIS).

"By converting these essential documents for use in both the Councils GIS and MIS Land Charges system we can improve the service we offer to our residents," said Paul Walker, Transport and Development Control Manager. "The aim is to reduce the time taken from the completion of searches from 10 days down to just 3."

In addition to the conversion and capture of Land Charges records the contract with GeODC also covers the conversion and capture of 250,000 historical planning related documents. GeODC will scan from paper records and plans, capture text from converted documents and reference site plans to the Council's Ordnance Survey base maps.

"As well as improving our customer service this project will also safeguard the long term future of this valuable information, improve data sharing and provide business continuity," continued Walker.



Once upon a time there was a sheepherder tending his sheep at the edge of a country road in rural Wyoming. A brand new Jeep Grand Cherokee screeched to a halt next to him. The driver, a young man dressed in a Brioni suit, Cerrutti shoes, Ray-Ban glasses, Jovial Swiss wristwatch and an Armani tie, jumped out and asked the herder "If I guess how many sheep you have, will you give me one of them?" The herder looked at the young man, then looked at the sprawling herd of grazing sheep and said "Okay." The young man parked the SUV, connected his notebook and wireless modem, entered a NASA site, scanned the ground using satellite imagery and a GPS, opened a database and 60 Excel tables filled with algorithms, then printed a 150-page report on his high-tech mini-printer.

He turned to the herder and said "You have exactly 1,586 sheep here." The herder answered "Say, you are right. Pick out a sheep." The young man took one of the animals and put it in the back of his vehicle. As he was preparing to drive away, the herder looked at him and asked "Now, if I guess your profession, will you pay me back in kind?" The young man answered "Sure." The herder said immediately "You are a consultant." "Exactly! How did you know?" asked the young man. "Very simple," replied the herder. "First you came here without being invited. Secondly, you charged me a fee to tell me something I already knew. Thirdly, you do not understand anything about my business, and I'd really like to have my dog back."



**For intelligent consultancy
call us on 01865 772893**